



REPUBLIC OF SLOVENIA

MINISTRY OF THE ENVIRONMENT AND SPATIAL PLANNING

MINISTER'S OFFICE



International Roundtable

“Integrated Management of Shared Groundwater in South Eastern Europe”

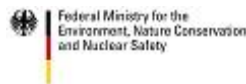
Brdo pri Kranju, Slovenia, 14-16 November 2007

Summary report of the working group 1: Resources assessment and linkages to freshwater and marine systems

Rapporteur: Tarik Kupusović, hydro-engineering Institute, Sarajevo, Bosnia
Facilitator: Joerg Prestor, Geological Survey of Slovenia

Organized by the
Slovenian Ministry of Environment and Spatial Planning
Global Water Partnership Mediterranean

Within the framework of
Petersberg Process Phase II / Athens Declaration Process
and
GEF IW:LEARN, Activity D2



Discussion participants: 16

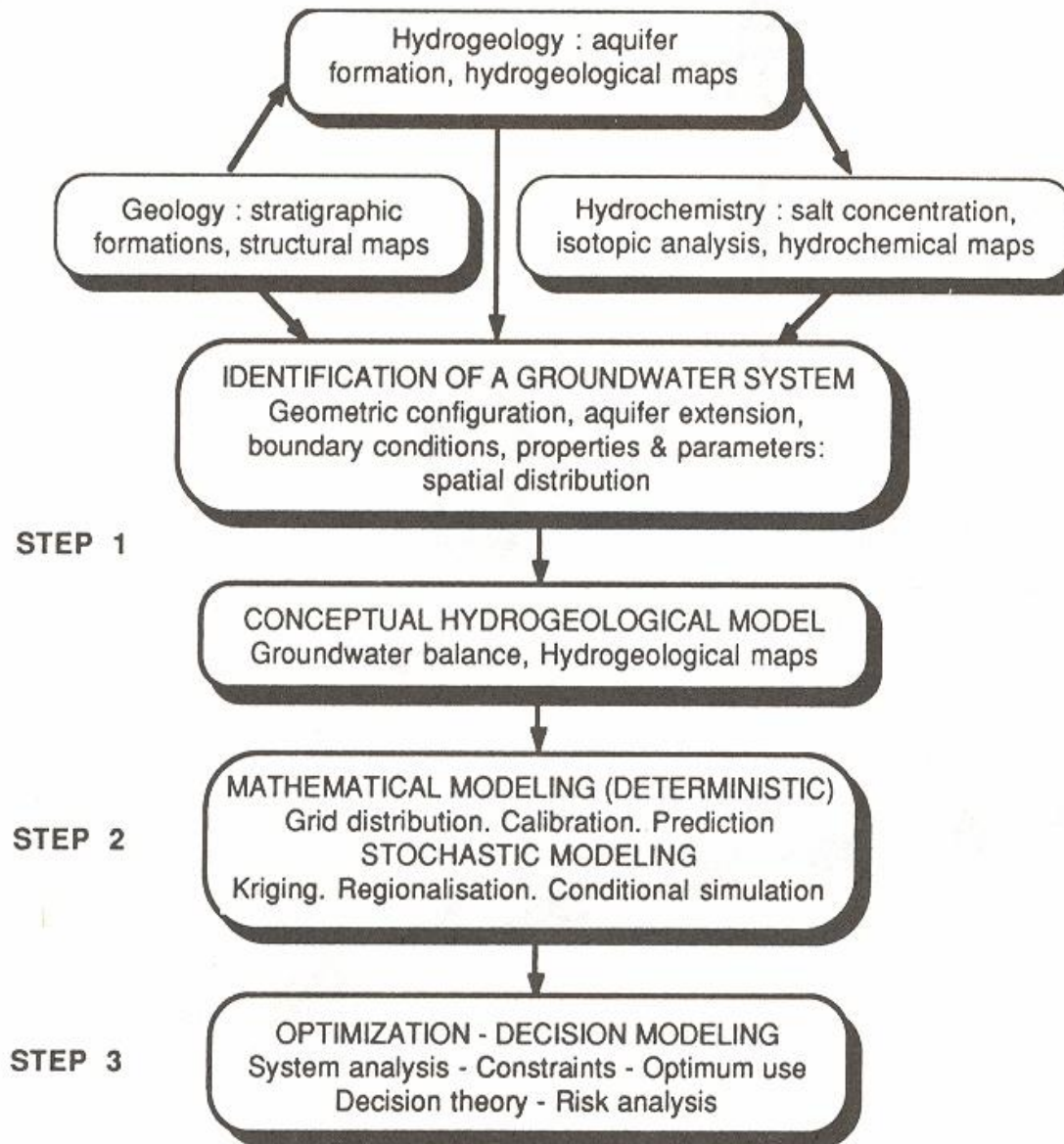
Arrised questions I - Monitoring:

1. Possible withdrawals (capture) of fresh water from submarine sources
2. Examples of simple methods for estimation of karst water quantity
3. Reconsideration of protection zones in Karst (in Croatia app. 60% of the karst territory) - too much to development
4. Problems with monitoring and explanation of information on base-flow and "washing" flow (in unsaturated zone)
5. Hydro power and water supply construction promoted monitoring, no excuse to lack of appropriate maintenance and modernization
6. Producing data is essential to develop conceptual models

Discussion participants: 16

Arrised questions II:

1. A part (3-5%) of the investment (well field, waste water treatment plant,...) should be allocated to monitoring
2. Combined monitoring network
3. Lack of monitoring data should not be excuse to delay of management measures
4. WFD can help to prioritize measures
5. Risk assessment – not so easy because of rapid changes – probability of accident, even within one country, trans-boundary, sometimes more costs than benefit
6. Lack of experiences of integrated coastal and water management
7. Recognition of trans-boundary water bodies and relations upstream-downstream country



Scheme presented by [Prof. J. Ganoulis](#)

